

# RUGBY IS GROWING

Rugby Borough Council is preparing for development in the Borough up to 2031.

The Local Plan will deliver a spatial planning strategy that provides the framework for future planning decisions in Rugby Borough and addresses the development needs and opportunities of the area. A 'Preferred Options' report for the Local Plan has been produced and is now out to public consultation...

**We want to know your view**



## WHAT IS A LOCAL PLAN?

National Planning Policy requires a Local Plan to consider:

- The homes, jobs, commercial, retail and leisure development required in an area;
- Infrastructure for transport, telecommunications, waste management, water supply, flood risk, healthcare, education, open space, community and cultural uses to support new development;
- Policies that seek to address climate change issues, the natural and historic environment and sustainable development

## WHAT ARE RUGBY'S DEVELOPMENT NEEDS?

The Local Plan seeks to allocate land to meet residential and employment development needs. Current evidence suggests that between 2011 and 2031, Rugby Borough needs to accommodate:

- 12,400 houses
- 96-104 hectares of employment land

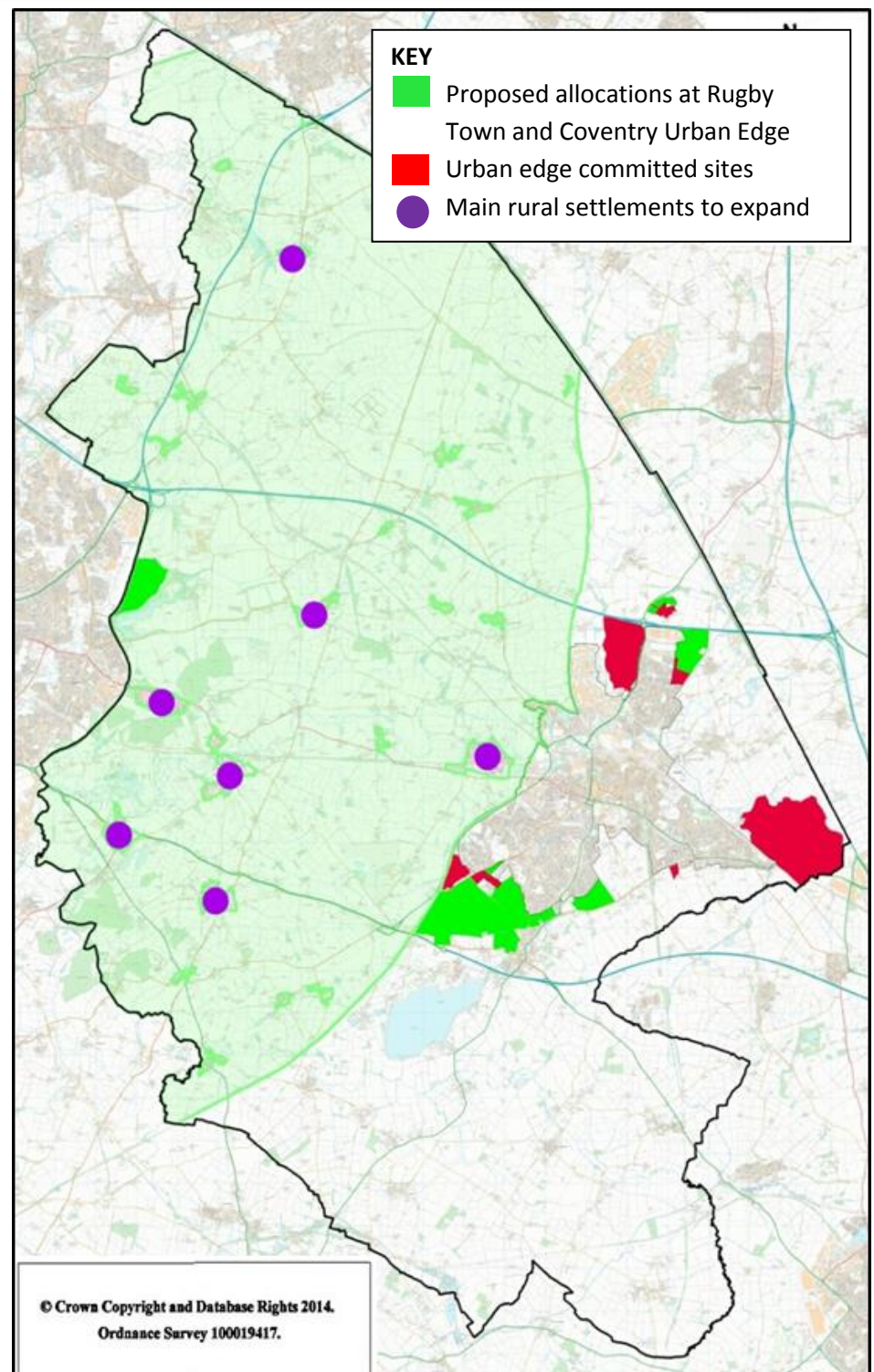
## HOW TO COMMENT

Representations to the Council must be received no later than **Friday 19<sup>th</sup> February 2016**.

The consultation form, consultation documents and supporting material are available at:

<https://www.rugby.gov.uk/localplan>

or contact: [localplan@rugby.gov.uk](mailto:localplan@rugby.gov.uk) | 01788 533741



## CALL FOR SITES

The map above sets out the Council's preferred location to accommodate future development, based on an assessment of all sites promoted for development through the call for sites process. The last call for sites process took place in the summer of 2014 and it is anticipated that owners of land, in both the rural and urban areas, may now wish to promote their sites for development. Therefore to ensure the Local Plan has considered all potential development sites within the Borough, the Council are running a further call for sites so that all options can be considered through the Local Plan process.

For further information on the call for sites process please visit [www.rugby.gov.uk/callforsites](http://www.rugby.gov.uk/callforsites) or contact 01788 533741.

**Forthcoming Public Exhibition Events:** (Please check the Council's website to keep up to date with any changes to events or additional venues added)

DATE	LOCATION	VENUE	TIME
Thursday 28 <sup>th</sup> Jan 2016	DUNCHURCH	Dunchurch Library, School St, CV22 6PA	18:00 – 20:00
Monday 1 <sup>st</sup> Feb 2016	CLIFTON UPON DUNSMORE	Townsend Memorial Hall, Church St, CV23 0BH	18:30 – 19:30
Wednesday 3 <sup>rd</sup> Feb 2016	RUGBY	Clock Towers, North Street, CV21 3DU	10:00 – 14:00
Thursday 4 <sup>th</sup> Feb 2016	GRANDBOROUGH	Village Hall, Sawbridge Road	18:00 – 20:00
Saturday 6 <sup>th</sup> Feb 2016	RUGBY	Clock Towers, North Street, CV21 3DU	10:00 – 14:00
Monday 8 <sup>th</sup> Feb 2016	STRETTON ON DUNSMORE	Knightlow School, Hill Crescent, CV23 9NF	19:00 – 20:30
Wednesday 10 <sup>th</sup> Feb 2016	CHURCH LAWFORD	Village Hall, School St, CV23 9EE	18:30 – 19:30
Thursday 11 <sup>th</sup> Feb 2016	BRINKLOW	Community Hall, Broad Street, CV23 0LS	17:30 – 19:00
Friday 12 <sup>th</sup> Feb 2016	RUGBY	Sainsburys, 385 Dunchurch Rd, CV22 6HU	10:00 – 14:00
Friday 12 <sup>th</sup> Feb 2016	BINLEY WOODS	Village Hall, Rugby Road, CV3 2AX	19:30 – 20:30